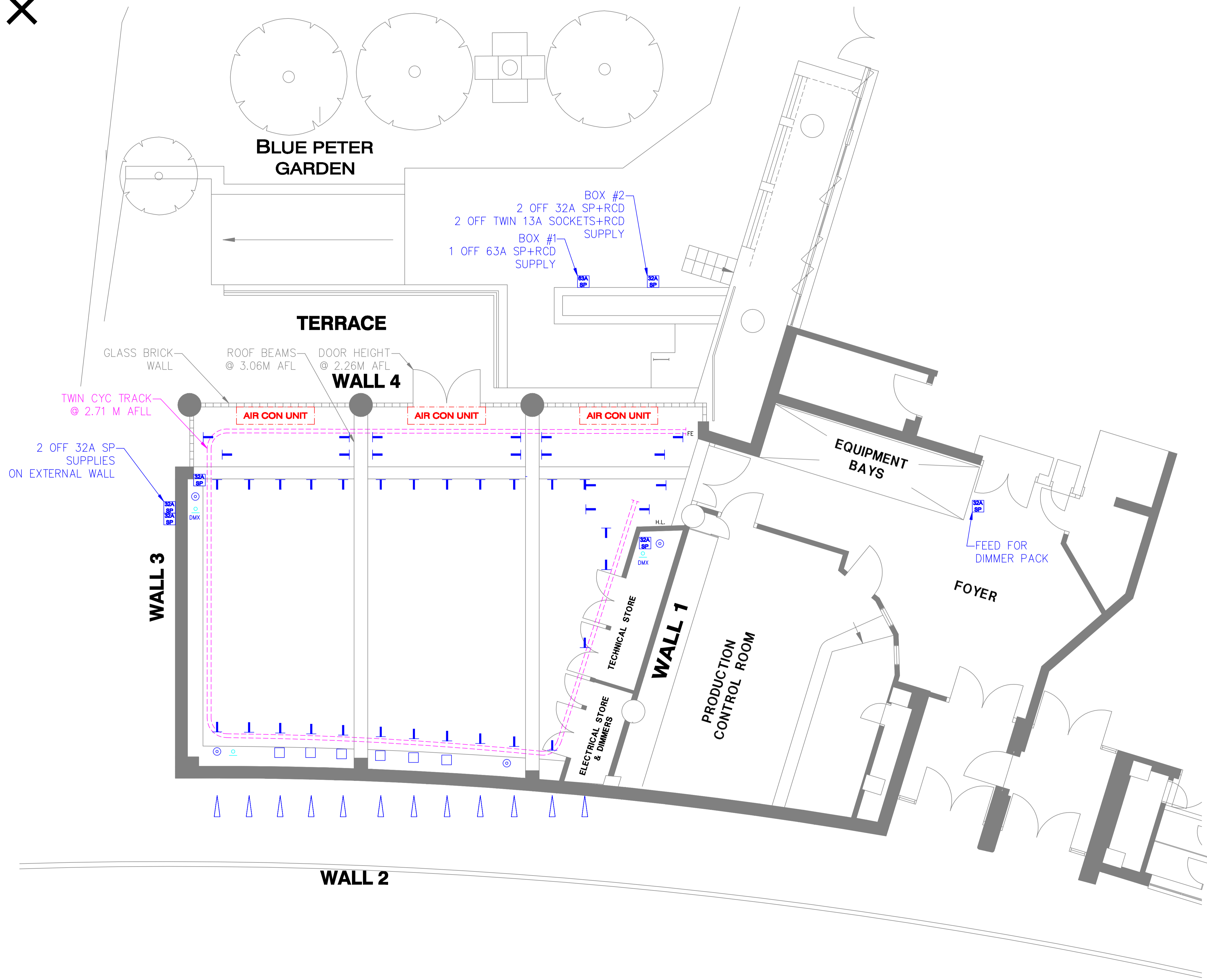
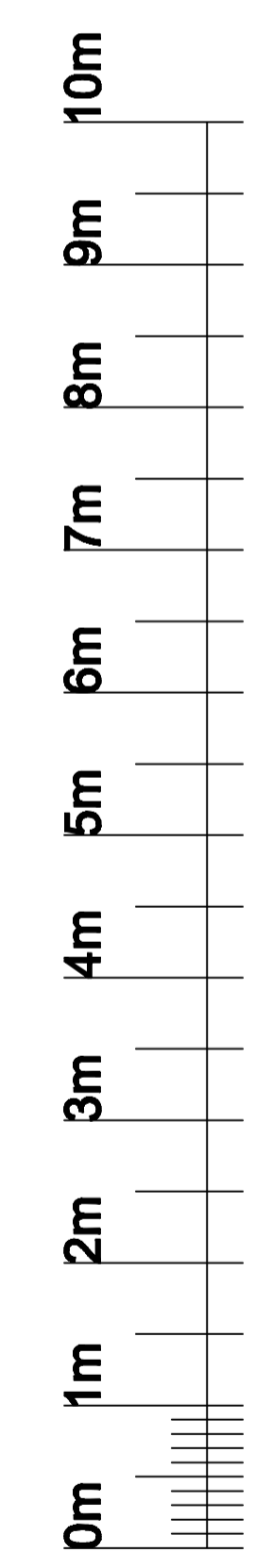


X



**KEY TO SYMBOLS**

- CAMERA CONNECTION
  - LIGHTING OUTLETS ON TRACKS
  - FLOOR LIGHTING OUTLET
  - HIGH LEVEL LIGHTING OUTLET
  - FE FIRE EXTINGUISHER
  - TECHNICAL WALL BOX - SOUND & VISION
  - HL HOUSE LIGHT SWITCH
  - LIGHTING TRACKS
  - CYC RAIL
  - AIRCON PLANT
  - 32A SP = 1ø 32A GS POWER
  - DMX DMX TIELINES.
- LIGHTING OUTLETS AVAILABLE**
- 1-68 Lighting track outlet 2½kW
  - 69-74 High level outlet 2½kW
  - 75-90 Floor outlet 2½kW
- CONTROL CHANNELS AVAILABLE FOR ADDITIONAL EQUIPMENT**
- |            |          |
|------------|----------|
| GALAXY No. | DMX No.  |
| 91 - 384   | 91 - 384 |
- HEIGHT OF LIGHTING TRACK 3.6 METERS  
PANTOS ON TRACK



PRODUCER \_\_\_\_\_

DIRECTOR \_\_\_\_\_

DESIGNER \_\_\_\_\_

LIGHTING \_\_\_\_\_

ZERO DATE \_\_\_\_\_

PRODUCTION DATE \_\_\_\_\_

**DESIGNERS LAYOUT**  
METRIC STUDIO PLAN SCALE 1:50@A1

# TC 9

PROGRAMME

